

Milestone Systems

XProtect® Corporate



The Open Platform Company



Premium software for high security

Enhance the manageability of sophisticated, multi-site installations with XProtect Corporate, powerful IP video management software (VMS) designed for large-scale, high-risk security deployments. With support for an unlimited number of cameras, users and sites, XProtect Corporate is flexible software with no limits. For systems demanding complete situational awareness and immediate response time, XProtect Corporate offers interactive, multi-layered maps linked to alarms. Built-in support for XProtect® Smart Wall, Milestone's video wall functionality, gives a comprehensive overview of installations and seamless command center control.

XProtect Corporate provides the ultimate peace of mind for high-security installations. Edge Storage support combined with failover recording servers and redundant management servers ensure video recordings are never interrupted and access to the system is always maintained. Secure camera connectivity and enhanced evidence handling help to ensure the integrity of live and recorded video.

Powerful software with easy-to-use features

Milestone's premium VMS product XProtect Corporate is the IP surveillance solution preferred for large, high-risk security installations.

With central administration for controlling all connected cameras, devices, storage and users, XProtect Corporate is an ideal solution for installations demanding constant live access to video and situational awareness. XProtect Corporate also has many tools and features that help reduce operating costs, such as support for 64-bit Recording Servers that enable you to have more cameras per server.

XProtect Corporate has two client applications for managing and using the system, the Management Client and XProtect® Smart Client. The Management Client is a single point of entry for administrators to configure and maintain the entire system. It provides remote handling of recording servers, devices and users.

Available in 26 languages, the XProtect Smart Client is an easy-to-use operator client that provides instant access to live cameras and recorded video. It enhances efficiency with task-oriented tabs and an adaptable user interface that can be tailored to your working environment including a selection of a black or white theme.

XProtect Corporate also supports full integration capabilities through the Milestone Integration Platform. Customize the software to fit your needs by integrating analytics, business systems and third-party applications.



XProtect® Mobile
View your installation on tablets and smartphones.

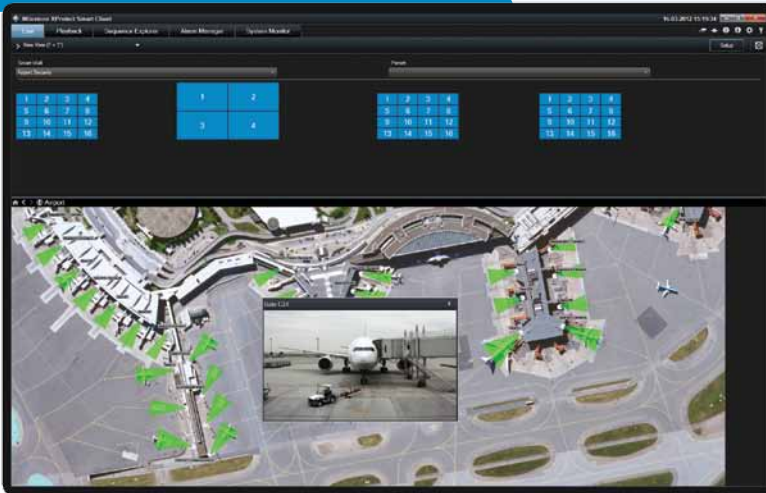
What's new in XProtect Corporate 5

- Support for 64-bit Recording Servers
- Edge Storage with flexible retrieval
- System Monitor
- Multi-live streaming
- Remote Connect Services enable you to securely connect remote cameras across different types of private and public networks, reducing the need to configure equipment on site
- Support for generic events allows other systems such as access control to trigger events in XProtect
- Secure HTTPS camera connection helps you protect the video integrity when connecting cameras across exposed wireless or outdoor networks
- You can secure evidence by including a digital signature, ensuring the export cannot be read by unauthorized people
- Sun clock time profile optimizes camera performance according to seasonal lighting conditions for a given GPS position

For more information about the new features, please visit www.milestonesys.com/xprotectcorporate

Live monitoring: features providing a complete overview

Situational awareness



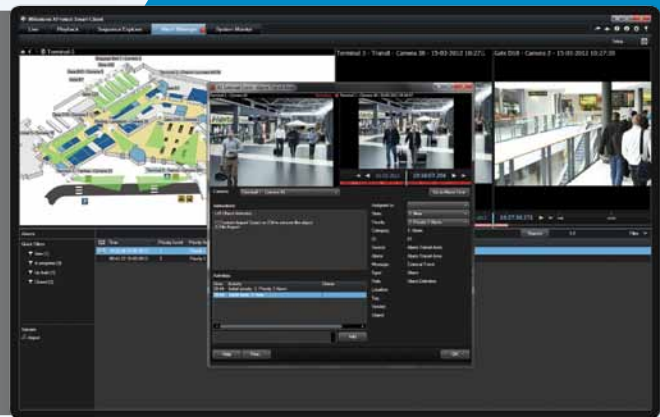
XProtect Smart Wall is an advanced video wall product for XProtect Corporate that provides superior situational awareness for large surveillance installations.

XProtect Smart Wall offers a uniquely efficient working environment because you can share views with multiple users. It supports any number or combination of monitors regardless of manufacturer and runs on standard servers and displays.

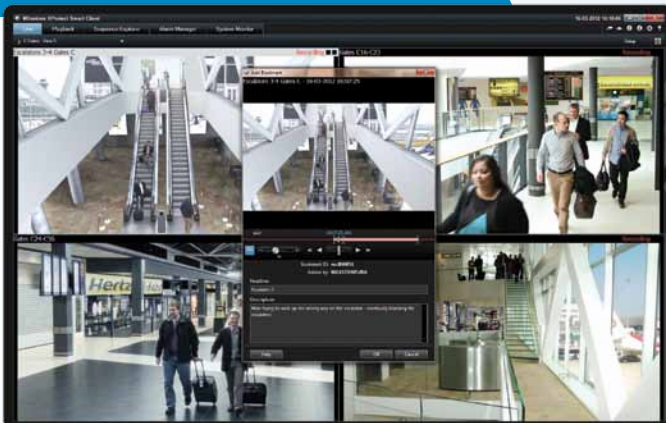
The Alarm Manager consolidates alarms from all connected security devices, systems and sites. The interactive map feature provides a comprehensive overview of cameras and layouts of an entire installation.

A prioritized alarm list gives an overview of active alarms and their severity. If an alarm is triggered, the alarm location map displays corresponding alarm and camera locations, providing instant situational awareness.

Interactive visual overview



Flag live video for later investigation



Bookmarking is a powerful feature that lets you flag video and add descriptive notes, so video sequences are found quickly.

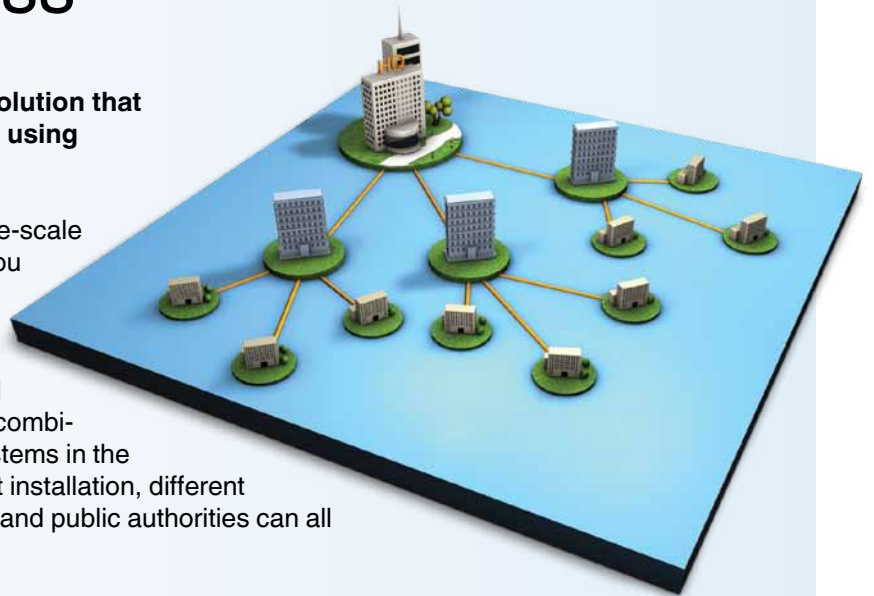
Bookmarks are created manually in live or playback mode or automatically based on events. Bookmarks are a helpful tool for installations with around-the-clock monitoring by multiple operators with different work shifts so they can easily share information.

Federating access

Milestone Federated Architecture™ is a solution that interconnects multiple, independent sites using XProtect Corporate.

Milestone Federated Architecture turns a large-scale surveillance system into manageable parts. You can have local-site administration or manage all of the sites as one large system.

With a flexible user rights structure, users and administrators can be granted access to any combination of sites - from a single system to all systems in the federated hierarchy. For example, in an airport installation, different agencies such as airlines, homeland security and public authorities can all receive access to the surveillance system.



High reliability for high-risk security installations

Failover Recording Servers and Edge Storage with flexible retrieval ensure critical video data is always captured. In normal operations, Recording Servers retrieve and record video from cameras. In the event of camera connectivity or Recording Server failure, video isn't recorded on the Recording Server, but cameras can continue to record to their internal Edge Storage*. Once connectivity is restored, the missing video is retrieved from the camera, ensuring recording of video is never lost.

In addition to retrieving the Edge Storage recordings from the camera when there is a failure, it is also possible to retrieve Edge Storage recordings on standard events or a defined schedule. This offers the possibility to postpone retrieval of recordings or only retrieve them on certain events.

*Cameras must be equipped with Edge Storage functionality that is supported by Milestone

XProtect Corporate detects missing recordings when the Recording Server is offline or a camera is disconnected



When system connection is restored, the Recording Server automatically retrieves the missing recordings from the camera. An additional option is to retrieve camera recordings on event or a time schedule

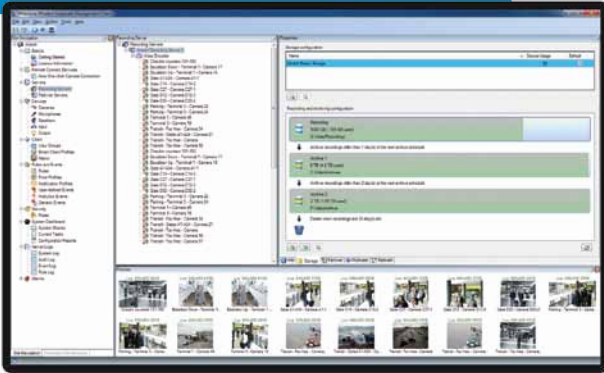


The isolated camera continuously records to its on-board storage with the same image size and frame rate



Reduce total cost of ownership

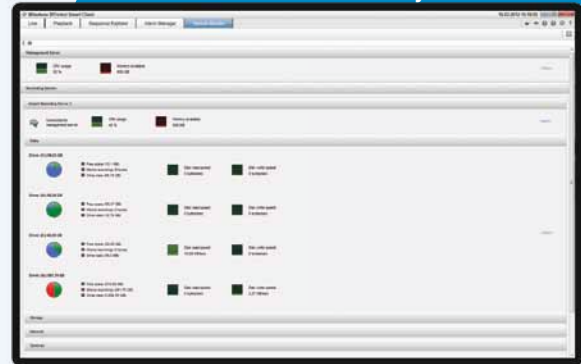
Multi-stage storage



Set multiple archive steps with individual retention times and frame rates to optimize storage use.

The ability to reduce frame rates or groom video data at each storage stage helps significantly reduce the cost of long-term video storage. For example, you can groom video data so it can be stored long term at a lower frame rate, which requires less storage space.

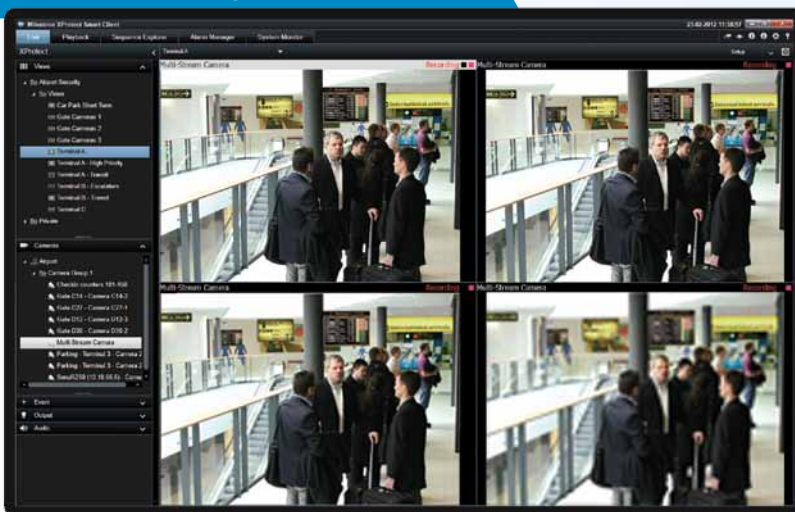
System Monitor



A new feature that displays live and historic information about system performance and storage use.

View graphs and charts of technical information about your system such as network data, storage load and memory use. A very detailed view of your installation's performance and statistics allows for proactive system management and maintenance. You can also export a configuration report of the system data in the Management Client.

Multi-live streaming and multicast



Define multiple streams for live viewing with different properties to suit available bandwidth from different viewing locations. Multi-live streaming optimizes bandwidth use and XProtect Smart Client performance when viewing many cameras in the same view.

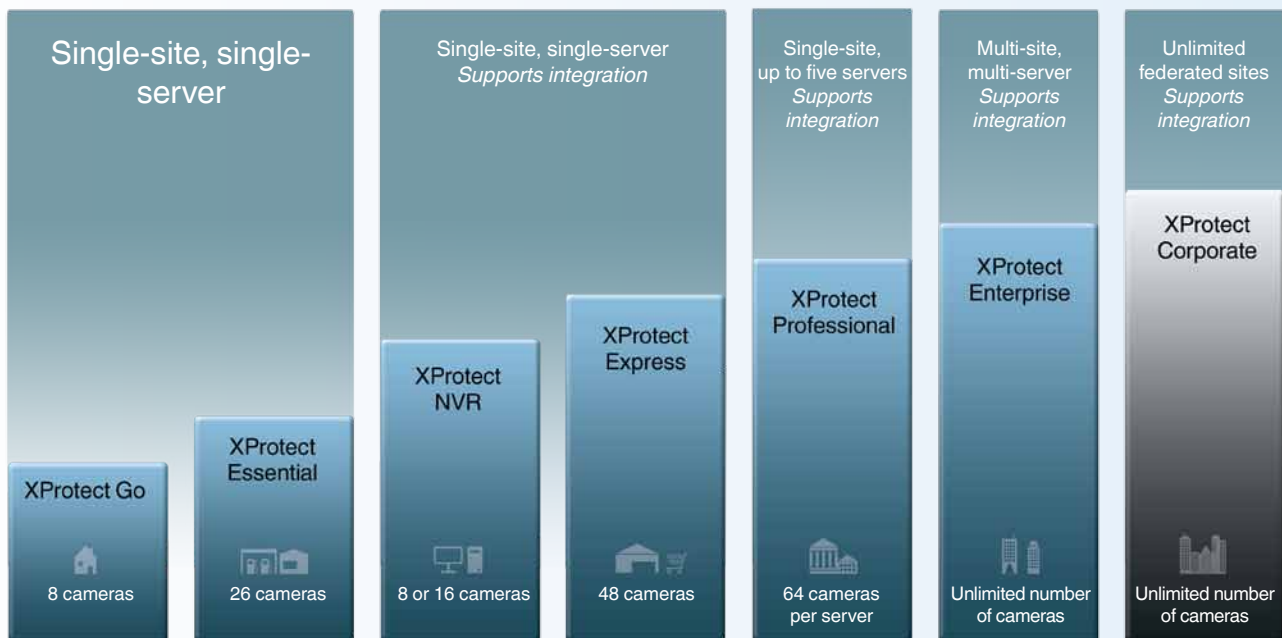
XProtect Corporate also supports multicast, allowing you to send one video stream to multiple XProtect Smart Clients. This helps optimize network performance, even in installations with low bandwidth.

The Milestone Open Platform

A foundation for long-term success

Milestone's XProtect open platform video management software (VMS) integrates with the industry's widest choice in cameras, giving you the freedom to choose equipment according to your needs and budget. Committed to providing a true IP video open platform and freedom of choice, Milestone is proud to be among the first VMS vendors to support and lead the future progress of ONVIF and PSIA standards.

Integrate applications and systems into XProtect VMS with the Milestone Integration Platform Software Development Kit (MIP SDK). The open architecture of XProtect, together with the MIP SDK, allows for endless possibilities to add features and functionality for creating powerful, custom surveillance solutions.



Milestone Systems HQ, DK
Tel: +45 88 300 300

Milestone Systems US
Tel: +1 503 350 1100

General inquiries:
info@milestonesys.com

Sales inquiries:
sales@milestonesys.com

Milestone has more than 10 offices around the world. For a complete list, visit www.milestonesys.com

About Milestone Systems

Founded in 1998, Milestone Systems is the global industry leader in open platform IP video management software. The XProtect platform delivers powerful surveillance that is easy to manage, reliable and proven in thousands of customer installations around the world. With support for the widest choice in network hardware and integration with other systems, XProtect provides best-in-class solutions to video enable organizations – managing risks, protecting people and assets, optimizing processes and reducing costs. Milestone software is sold through authorized and certified partners. For more information, visit: www.milestonesys.com

