

Milestone Systems XProtect® Enterprise



Easy-to-use IP video surveillance with state-of-the-art functionality

Milestone XProtect Enterprise is comprehensive open platform IP video management software (VMS) for medium and large-scale installations, primarily multi-site, multi-server deployments. Quick and easy to set up and manage, XProtect Enterprise's powerful features such as system configuration wizards and auto-detection of hardware significantly reduce the time and costs of deploying large security installations. The consolidated single-management interface provides a coherent and efficient way to view and control an unlimited number of cameras,* giving supreme situational awareness for quick response and accurate investigation.

Continually setting the standard in IP VMS, XProtect Enterprise has innovative features that optimize the surveillance of your installation. The software also supports endless integration possibilities allowing you to future proof your investment and add customized functionality to your security solution.

*For most installations larger than 250 cameras, Milestone recommends using our top-of-the-line product XProtect® Corporate.

The Milestone open platform is your foundation for success

Milestone is the world's leading provider of open platform IP video surveillance software. XProtect is designed with open architecture that allows for integration with the widest choice of network video and computer hardware. XProtect products interface with more than 1,000 IP cameras, encoders and digital video recorders (DVRs) from almost 100 different manufacturers. Committed to providing a true IP video open platform and freedom of choice, Milestone is proud to be among the first VMS vendors to support and lead the future progress of ONVIF and PSIA standards.

The open platform lets you optimize your security installation with today's and tomorrow's best-in-class solutions because hardware is decoupled from software. By integrating IP video with multiple security systems and video analytics, you gain true value-adding efficiency and expand your capabilities.

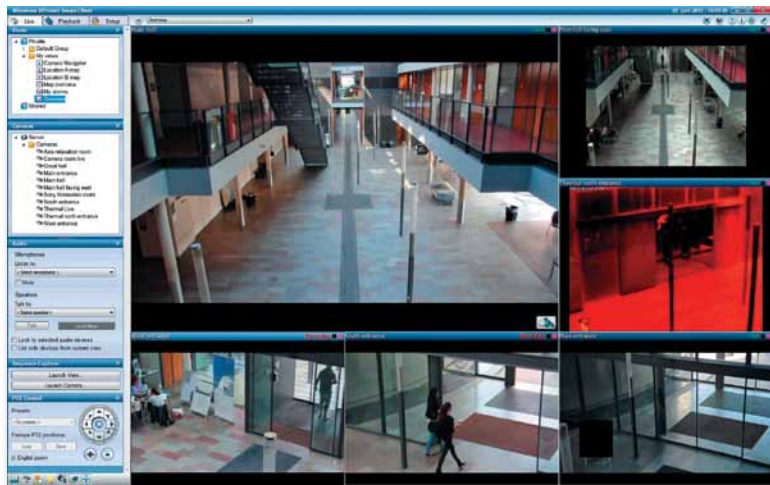
- **Supreme situational awareness:** The industry-new Camera Navigator and other innovative features provide comprehensive visual verification of the entire surveillance installation
- **Scalable solution:** Distributed master/slave servers support an unlimited number of cameras, servers, sites and users
- **Optimize performance:** Expanded viewing, recording and storage possibilities increase the performance of your hardware



milestone

The Open Platform Company

Increase effectiveness with the XProtect® Smart Client



Daily operations are easily executed through the XProtect Smart Client, a client application that provides you with instant access to live and recorded video.

XProtect Smart Client features:

- **The Sequence Explorer:** An instant overview of recorded video and bookmarked incidents.
- **Independent playback:** Allows you to play back events on one camera while still monitoring live video.
- **Overlay buttons:** Enable control of cameras and devices directly from the camera view.
- **Language support:** The XProtect Smart Client is available in 26 languages.
- **Fast evidence export:** Quickly export video in various formats, including video from multiple cameras with viewer, logs and user notes included.
- **Multi-channel, two-way audio:** Communicate with people at gates/entrances or broadcast messages to many people at once
- **Advanced alert handling:** Save time and resources by activating recordings by events or video motion detection triggered by the system or cameras. Send email or SMS alert notifications.

The XProtect Smart Client – Player is a new video viewer for exported material from XProtect VMS systems. It has the same familiar and user-friendly interface as the XProtect Smart Client, so managing exported video is intuitive. With XProtect Smart Client – Player, viewing and collecting video evidence is easier than ever with features such as:

- Instant one-click playback for easy viewing of exported video evidence
- Advanced second-level investigation tools make it easy to refine exported video and re-export the most essential evidence
- The project tool allows users to merge video exports or archives from two different locations or XProtect systems together into one new export

Comprehensive software delivering ultimate usability

Perfect for medium to large-scale, multi-site installations, XProtect Enterprise is the market's easiest IP VMS to deploy, manage and operate, with powerful tools such as:

- **Smart bulk configuration** allows multiple cameras to be easily set up with similar settings
- **Export or import system** and user configuration data for backups or multi-site cloning
- **Automatic system restoration** points enable users to cancel undesired changes and easily revert to previous configurations
- **Archive on event** allows you to trigger the archive process based on a time schedule or an event

XProtect Enterprise also features comprehensive **user rights settings** and allows administrators to enable or disable certain settings according to specific staff categories or user skill levels. User access rights enable, among other functions live access to cameras, the ability to play back specific cameras, control pan-tilt-zoom (PTZ) cameras and export evidence materials. Thorough audit logs give you a comprehensive display of the system and users.

XProtect Enterprise upholds viewing regulations with **privacy masking**, a feature that protects privacy by concealing parts of an image from being viewed. Once activated, the privacy mask is consistently applied to live, playback and exported video, protecting the privacy of the sensitive image.

Enhanced features optimize existing hardware

Storage

XProtect Enterprise has a cost-efficient, long-term video storage option with features such as dynamic archiving that saves valuable disk space. Short-term video is stored on fast, local disks while historical data is moved to less expensive, networked disk systems maintaining instant, full and transparent access to archived video.

Dual streaming

Hardware is optimized with two independent, configurable video streams for live and recording viewing allowing clients, servers and network infrastructure to be utilized to their full capacity. Each stream can be individually optimized on the XProtect Enterprise server for stream compression, resolution and frame rate, meeting recording and live monitoring requirements.

Motion detection

Performance-enhanced motion detection lowers memory and central processing unit (CPU) consumption even when additional cameras are added. With XProtect Enterprise's motion detection you can detect motion on key frames or on a specific part of the video in regular quality or lower video resolution. It can also be switched off.

Seeing is believing!

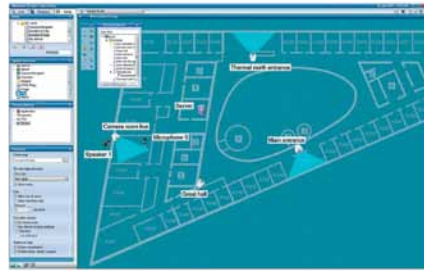
Innovative features integrated into the XProtect Smart Client provide ultimate situational awareness



Camera Navigator

The Camera Navigator provides more consistent and comprehensive visual verification, ensuring easier object tracking in geographically complex security locations.

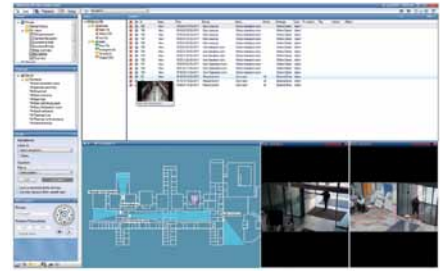
XProtect Enterprise supports the industry-exclusive Camera Navigator, which collects camera locations, camera names and view areas from the map feature, making an otherwise complex surveillance location easy to navigate. Moving objects are easily tracked because whenever you view a camera feed, nearby cameras are automatically displayed on the screen.



Map

Interactive, multi-layered maps provide a comprehensive overview of cameras and layouts of an entire surveillance installation, allowing quick detection of trouble areas.

You can overlay components such as cameras, speakers and input/output devices on any graphical image of your installation, giving you an outstanding visual overview of geographically complex areas. Maps also improve response time with instant notification of trouble areas and security breaches as well as real-time status of all system devices.



Alarm Manager

Alarms are consolidated from all security devices and systems into the Alarm Manager for immediate visual verification of alarms, which decreases the number of false alarms.

Integrated with the map function, the Alarm Manager gives you a complete visual overview of the installation and provides a prioritized alarm list from all security and alarm systems that are video enabled. You can also set up system alarms for malfunctioning cameras, storage servers and other components to enable immediate detection of system problems. Work instructions are coupled to alarms, ensuring more rapid and consistent handling of incidents.

ImmerVision Enables® 360° panomorph lens support

XProtect Enterprise has ImmerVision Enables® 360° panomorph lens support, giving you the ability to mount an ImmerVision Enables® 360° lens on select cameras to get a 360° surround view. With a complete view of your installation, a panomorph lens removes blind spots so you can track, detect and analyze the entire area in live or playback mode, improving reaction time.

Compared to a fisheye lens, a panomorph lens has greater optical image sensor coverage and provides a superior picture even on lower resolution cameras. This means a panomorph lens requires fewer pixels on its sensor to produce the same resolution, allowing you to increase the number of cameras without using up all available bandwidth.

Mounted on a regular camera, a panomorph lens increases your video surveillance coverage while reducing the total number of cameras, requiring less server storage and reducing hardware costs. An additional camera license is not required for cameras using a panomorph lens.



XProtect Enterprise offers the described 360° functionality for cameras equipped with ImmerVision Enables® 360° panomorph lenses.



The Open Platform: a foundation for long-term success

Milestone XProtect acts as the powerful core of surveillance systems, providing the widest choice in third-party hardware components and integration with other business systems. It is the foundation enabling you to cost effectively choose the best solutions for today and tomorrow.

The Milestone Integration Platform Software Development Kit (MIP SDK) enables integration of applications and systems into XProtect software. The open architecture of XProtect, together with the MIP SDK allows for endless possibilities to add features and functionality for creating powerful, new surveillance solutions.



About Milestone Systems

Founded in 1998, Milestone Systems is the global industry leader in open platform IP video management software. The XProtect platform delivers powerful surveillance that is easy to manage, reliable and proven in thousands of customer installations around the world. With support for the widest choice in network hardware and integration with other systems, XProtect provides best-in-class solutions to 'video enable' organizations – managing risks, protecting people and assets, optimizing processes and reducing costs. Milestone software is sold through authorized and certified partners. For more information, visit: www.milestone.com

Milestone Systems Headquarters, DK
Tel: +45 88 300 300

Milestone Systems US
Tel: +1 503 350 1100

Milestone Systems Italy
Tel: +39 02 6179 7507

Milestone Systems UK
Tel: +44 (0) 1332 869380

Milestone Systems Brasil
Tel: +55 11 21374421

Milestone Systems Germany
Tel: +49 (0) 611 168 5597

Milestone Systems France
Tel: +33 1 75 61 06 30

Milestone Systems Spain
Tel: +34 669 483 312

Milestone Systems Singapore
Tel: +65 6225 2686

Milestone Systems Bulgaria
Tel: +35 92 4426172

Milestone Systems Japan
Tel: +81 (0) 3 3780 8749

Milestone Systems UAE
Tel: +971 4 3641 380

Milestone Systems Australia
Tel: +61 3 9466 7806

General inquiries:
info@milestonesys.com

Sales inquiries:
sales@milestonesys.com

XProtect is a registered trademark of Milestone Systems
© 2011 Milestone Systems. All rights reserved.



The Open Platform Company